

THE MAJESTY OF THE MONARCHY

Studies in II Samuel

Lesson 9

LESSONS FROM LOSS

II Samuel 17:24-20:26

I. THE DEFEAT AND DEATH OF ABSALOM 17:24-18:18

A. David's Friends 17:24-29

B. The Battle in the Forest 18:1-8

C. The Death of Absalom 9-18

1. His arrogance
2. His pride, his downfall

D. The News Comes to David 19-32

E. David's Grief and Joab's Objection 18:33-19:8a

1. David's grief
2. Joab's wisdom

II. DAVID RETURNS TO JERUSALEM 19:8b-43

A. The Confusion 8b-10

B. David Appeals to Judah 11-15

1. He asks the priests to intercede 12
2. He unwisely promotes Amasa (David's nephew and Absalom's cousin) over Joab 13 (Cp. 17:25)

C. David Met by Three Concerned in His Flight 16-40

1. Shimei, to whom he shows mercy but not forgiveness 16-23 (Cp. I Kings 2:8-9)
2. Mephibosheth, to whom he restores half his land 24-30
3. Barzillai, to whom he offers his home 31-40

D. David's Marred Homecoming 41-43

1. The old rivalries flare up
2. The stage is set for the division of the Kingdom

III. SHEBA'S REVOLT AND AMASA'S DEATH 20:1-26

A. The Inattention of David and the Revolt 1-3

B. The Incompetence of Amasa 4-5

C. The Command of Abishai, Joab's brother 6-7

D. The Murder of Amasa 8-13

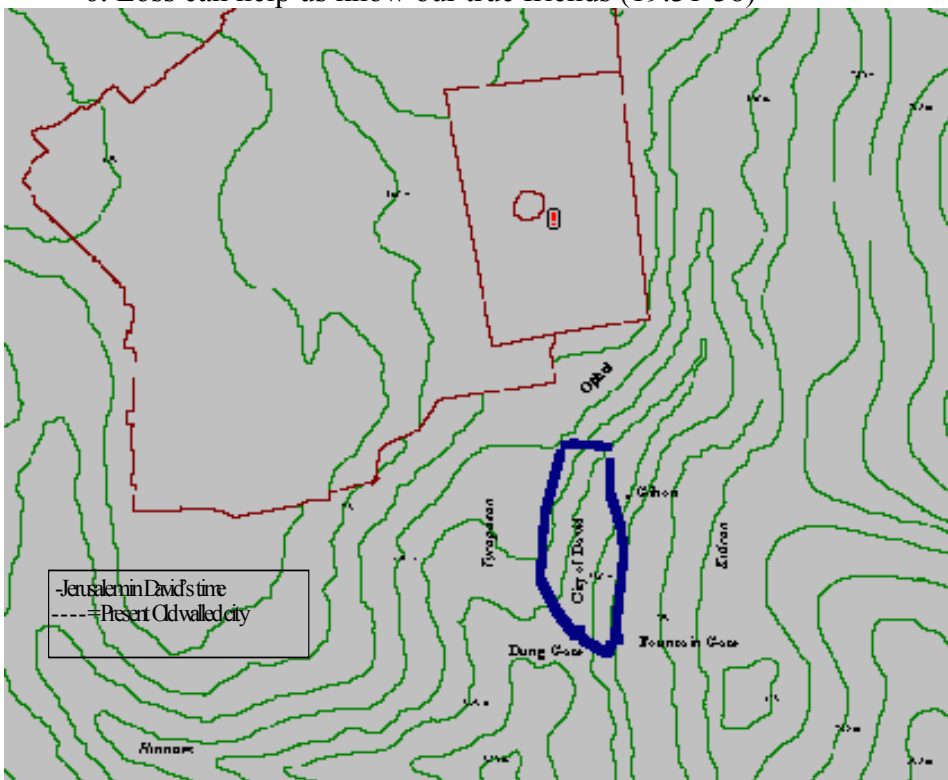
E. The Death of Sheba 14-22

1. The siege of Abel, Beth Maacah 14-15
2. The wise woman of Abel and the beheading of Sheba 16 - 21

F. The Officials of David's Kingdom 23-26

APPLICATIONS:

1. Self absorption causes indifference and apathy.
2. Love can blind us to real dangers.
3. Loss can make us lose our perspective (19:1-7).
4. Loss can make us appreciate what we lost (19:9).
5. Loss can make us sympathetic to others' failures (19:22-23).
6. Loss can help us know our true friends (19:31-38)



THE MAJESTY OF THE MONARCHY, LESSON 9

